

2011 UC Irvine Stroke Symposium

OCTOBER 29, 2011

THE FAIRMONT HOTEL
NEWPORT BEACH
CALIFORNIA

COURSE OVERVIEW

The 3rd annual UC Irvine Stroke and Cerebrovascular Center Symposium is offering a full-day CME symposium designed to increase awareness and offer the latest in advances of treatment of stroke patients from early identification through hospitalization and neuro rehabilitation. This activity will outline the standard of care as applied in internationally recognized stroke care and cerebrovascular centers. Participants will have an opportunity to engage in interactive discussions with renowned faculty who are involved in initiating these neurological advances.

TARGET AUDIENCE

Neurologists, neurosurgeons, neurointerventional radiologists, radiologists, neurointensivists, physiatrists, primary care physicians, internal medicine physicians, family medicine physicians, emergency medicine physicians, nurses, nurse practitioners, physician assistants, paramedics, emergency medicine technologists, speech therapists, physical therapists, occupational therapists, and other healthcare professionals who wish to update their knowledge of the management of patients with stroke and select cerebrovascular diseases.

2011 UC Irvine Stroke Symposium

Neuroendovascular Management
and Neurocritical Care of the
Stroke Patient

OCTOBER 29, 2011

THE FAIRMONT HOTEL
4500 MACARTHUR BLVD
NEWPORT BEACH
CALIFORNIA

STROKE &
CEREBROVASCULAR CENTER

UC IRVINE • HEALTHCARE

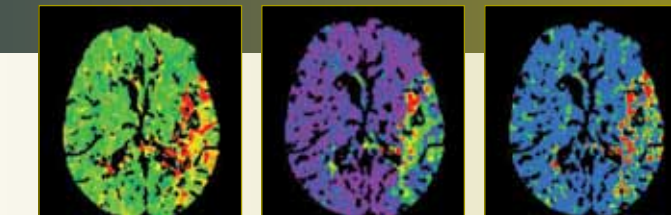
Joint Commission-Certified Primary Stroke Center

FACULTY

COURSE DIRECTOR



Vivek Jain, MD
Assistant Clinical Professor
Department of Neurology
Medical Director, UC Irvine Stroke & Cerebrovascular Center
University of California, Irvine



GUEST FACULTY



Gregory W. Albers, MD
Director
Stanford Stroke Center
Professor of Neurology
and Neurological Sciences
Stanford University Medical Center



Bruce Ovbiagele, MD
Professor
Department of Neurology
University of California, San Diego



Victor Marder, MD
Professor
Department of Medicine
Ronald Reagan, UCLA Medical Center

UNIVERSITY OF CALIFORNIA, IRVINE FACULTY



Linda Abceda, MD
Assistant Clinical Professor
Department of Neurology
University of California, Irvine



Mark J. Fisher, MD
Professor
Department of Neurology
University of California, Irvine



Lama M. Al-Khoury, MD
Assistant Clinical Professor
Department of Neurology
University of California, Irvine



Maurico Gomez, MD
Assistant Clinical Professor
Director, Neuroscience ICU
Department of Neurology
University of California, Irvine



Armen Choulakian, MD, PhD
Assistant Clinical Professor
Department of Neurosurgery
University of California, Irvine



Anton N. Hasso, MD
Professor
Director, Neuroimaging Research
Department of Radiological Sciences
University of California, Irvine



Ralph V. Clayman, MD
Dean, School of Medicine
University of California, Irvine



Cagin Senturk, MD
Assistant Clinical Professor
Department of Radiological Sciences
University of California, Irvine



Steven C. Cramer, MD
Professor
Department of Neurology
University of California, Irvine



Steven L. Small, MD, PhD
Chair
Department of Neurology
University of California, Irvine



Hamed Farid, MD
Assistant Clinical Professor
Department of Radiological Sciences
University of California, Irvine



Shuichi Suzuki, MD, PhD
Associate Clinical Professor
Director, Interventional Neuroradiology
Department of Radiology
University of California, Irvine

LOCATION



THE FAIRMONT HOTEL

4500 MacArthur Boulevard
Newport Beach, CA 92660
949.476.2001

DIRECTIONS

From John Wayne / Orange County Airport

- Turn right on MacArthur Boulevard.
- Pass through the light at Birch Street and make an immediate left turn into The Fairmont Newport Beach driveway.
- Hotel is located on MacArthur Boulevard between Birch Street and Von Karman Avenue.

From Points North or South

- From I-405 exit MacArthur Boulevard.
- Turn left onto MacArthur. Pass through the light at Birch Street and make an immediate left turn into The Fairmont Newport Beach driveway.
- Hotel is located on MacArthur Boulevard between Birch Street and Von Karman Avenue.

From Points East

- Follow the 91 Freeway West to the 55 Freeway South to the 405 Freeway South.
- Exit MacArthur Boulevard.
- Turn left onto MacArthur. Pass through the light at Birch Street and make an immediate left turn into The Fairmont Newport Beach driveway.
- Hotel is located on MacArthur Boulevard between Birch Street and Von Karman Avenue.

PROGRAM

- 7:30 am REGISTRATION & BREAKFAST
- 8:15 am Welcome & Introductions
Vivek Jain, MD
Medical Director, UC Irvine Stroke & Cerebrovascular Center
- Opening Remarks
Ralph V. Clayman, MD
Dean, UC Irvine School of Medicine
- Steven L. Small, MD, PhD
Chair, Department of Neurology, UC Irvine School of Medicine

Acute Ischemic Stroke

- 8:30 am Prehospital and ER Assessment of the Acute Stroke Patient
Vivek Jain, MD
- 9:00 am Acute Stroke Imaging: Pathophysiological Correlates of Imaging in Stroke
Anton Hasso, MD
- 9:30 am Misperceptions in Brain Ischemia: Technology, Terminology, Tissue and Time
Gregory W. Albers, MD
- 10:15 am BREAK
- 10:30 am Update on Endovascular Treatment of Acute Ischemic Stroke: Drugs, Devices and Data
Shuichi Suzuki, MD
- 11:00 am Malignant MCA Stroke: Predicting, Preventing and Treating
Linda Abceda, MD
- 11:30 am Intracranial Hypertension: Diagnosis and Management
Maurico Gomez, MD
- Noon LUNCH

Stroke Prevention, Recovery

- 1:00 pm New Directions in Stroke Prevention
Mark Fisher, MD
- 1:30 pm Dabigatran: Stroke Prevention in Atrial Fibrillation
Victor Marder, MD
- 2:00 pm Chronic Kidney Disease: Emerging Risk Marker or Risk Factor for Stroke?
Bruce Ovbiagele, MD
- 2:30 pm BREAK
- 2:45 pm Brain Repair and Rehabilitation After Stroke
Steven C. Cramer, MD

Intracranial Hemorrhage

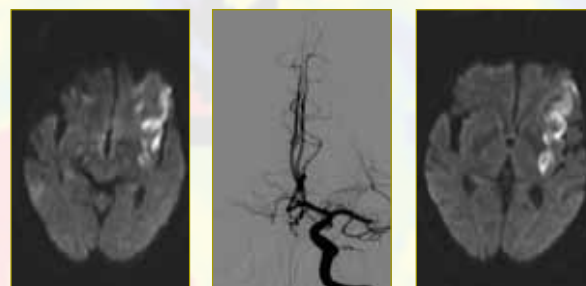
- 3:15 pm Medical Management of ICH
Lama M. Al-Khoury, MD
- 3:45 pm SAH: Clinical Management Strategies after Aneurysmal Rupture
Armen Choulakian, MD, PhD
- 4:15 pm Endovascular Treatment of Brain Aneurysms
Hamed Farid, MD
- 4:45 pm Endovascular Management of Brain AVMs and AV Fistulas
Cagin Senturk, MD
- 5:15 pm CLOSING REMARKS & ADJOURN
Vivek Jain, MD

CME

LEARNING OBJECTIVES

At the conclusion of this activity, participants should be able to:

- Discuss current and emerging treatment options for stroke and other cerebrovascular diseases to improve patient outcomes, with a special focus on acute neuroendovascular and neurocritical care.
- Identify appropriate imaging techniques in the management of acute stroke and cerebrovascular disease to enable more efficient effective treatment.
- Apply the current evidence-based pharmacologic and lifestyle strategies for stroke prevention.
- Appreciate the role of rehabilitation in optimizing post-stroke recovery.



ACCREDITATION STATEMENT

The University of California, Irvine School of Medicine is accredited by the Accreditation Council for Continuing Medical Education to provide continuing medical education for physicians.

DESIGNATION STATEMENT

The University of California, Irvine School of Medicine designates the live activity for a maximum of 7.0 AMA PRA Category 1 Credits™. Physicians should only claim credit commensurate with the extent of their participation in the activity.

CALIFORNIA ASSEMBLY BILL 1195

California Assembly Bill 1195 requires continuing medical education activities with patient care components to include curriculum in the subjects of cultural and linguistic competency. It is the intent of the bill, which went into effect on July 1, 2006, to encourage physicians and surgeons, CME providers in the state of California, and the Accreditation Council for Continuing Medical Education to meet the cultural and linguistic concerns of a diverse patient population through appropriate professional development. The planners, speakers and authors of this CME activity have been encouraged to address issues relevant in their topic area. In addition, a variety of resources are available that address cultural and linguistic competency, some of which are included in your syllabus or handout materials. Additional resources and information about AB1195 can be found on our website at www.cme.uci.edu.

ADA STATEMENT

In compliance with the Americans with Disabilities Act, we will make every reasonable effort to accommodate your needs. For any special requests, please contact Lgumser@uci.edu or 714.456.3707 on or before October 1, 2011.

DISCLOSURE STATEMENT

It is the policy for the University of California, Irvine School of Medicine and University of California CME Consortium to ensure balance, independence, objectivity and scientific rigor in all CME activities. Full disclosure of conflict resolution will be made in writing via handout materials or syllabus.

REGISTRATION

2011 UC Irvine Stroke Symposium

Saturday, October 29, 2011

THE FAIRMONT HOTEL NEWPORT BEACH



CONTACT INFORMATION

NAME (First, Middle, Last)		CREDENTIALS	
ORGANIZATION		MEDICAL SPECIALTY	
Preferred mailing address is (select one): <input type="radio"/> Work/Business <input type="radio"/> Home			
ADDRESS			
CITY	STATE	ZIP	
EMAIL (required for confirmation)			
TELEPHONE <input type="radio"/> Cell <input type="radio"/> Home <input type="radio"/> Work		FAX	
Special Needs: If you have special assistance needs or dietary restrictions, please describe here:			

REGISTRATION

Symposium Registration Fee:	
<input type="radio"/> Physicians	\$125.00
<input type="radio"/> PA's/Nurses/Allied Health Professionals	\$80.00

PAYMENT INFORMATION

<input type="radio"/> Check is enclosed in the amount shown at right—make checks payable to UC REGENTS		\$
Credit Card (select one): <input type="radio"/> MC <input type="radio"/> Visa <input type="radio"/> AmEx <input type="radio"/> Discover	ACCOUNT NUMBER	EXP. DATE (MO/YR)
LAST NAME, FIRST NAME (please print)		
SIGNATURE		DATE

PLEASE MAIL OR FAX COMPLETED REGISTRATION FORM AND CHECK TO:

UC Irvine Medical Center
Elena Castellon, Business Development
333 City Blvd West, Suite 1205, Orange, CA 92868
714.456.8223 • 714.456.7713 (fax) • elena@uci.edu